

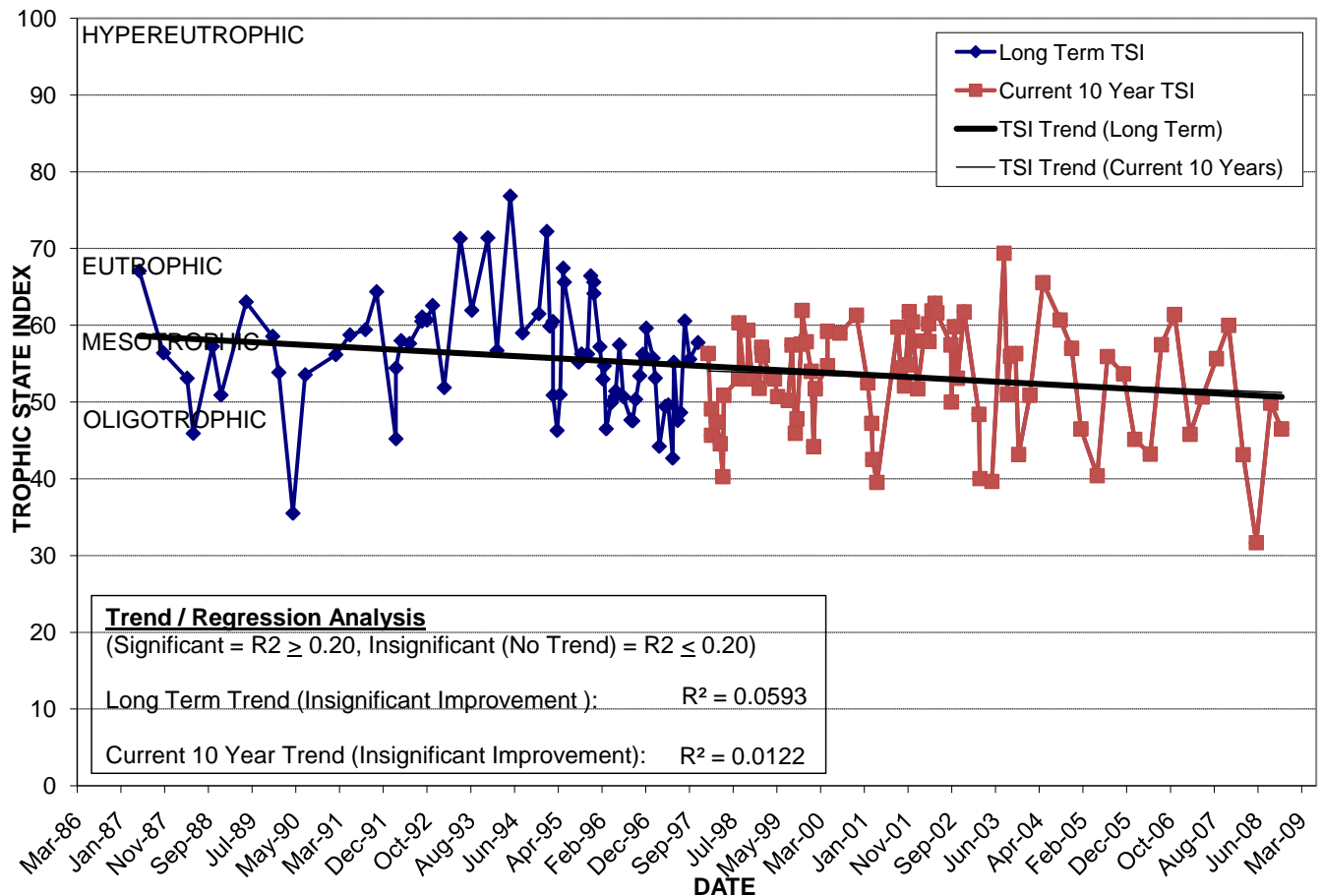
# LAKE ESTELLE EAST

Location: Lat **N 28° 34' 26.9"** Long **W 81° 21' 47.0"**  
 Section **13** Township **22S** Range **29E**  
 Lake Surface Area: **23 acres**  
 Lake Volume: **15,694,800 ft<sup>3</sup>**  
 Shoreline Length: **5,015 ft (1,529 m)**  
 Mean Depth: **15.6 ft (4.8 m)**  
 Maximum Depth: **33.6 ft (10.2 m)**

Water Management District: **St. Johns River**  
 Drainage Code: **SJ-HB-22**  
 Drainage Basin Area: **183 acres \***  
 Land Use: **33% Res, 40% Com, 23% Vac \***  
 Drain Wells: **1** Aeration: **No**  
 Lake Origin: **Natural**  
 Grass Carp (*Ctenopharyngodon idella*): **Yes**

2008 Water Quality Data		TSI Ranking: 30 (out of 95 lakes)			
	Total Phosphorus (mg/l)	Total Nitrogen (mg/l)	Secchi Depth (m)	Chlorophyll-a (mg/m3)	Trophic State Index
Minimum	0.013	0.68	1.4	2.8	32
Maximum	0.023	1.04	3.0	9.1	50
Average	0.019	0.84	2.0	6.1	43

**Long-Term Trophic State Index Values and Linear Regression Trend Line**



**Comments:** \* Numbers are for total lake, east and west lobe. This report treats Lake Estelle as two separate lakes for water quality purposes only.

**Location:** Split by Mills Ave. (US 17-92) between Rollins St. and Dorchester St., adjacent to (east of) Florida Hospital.