

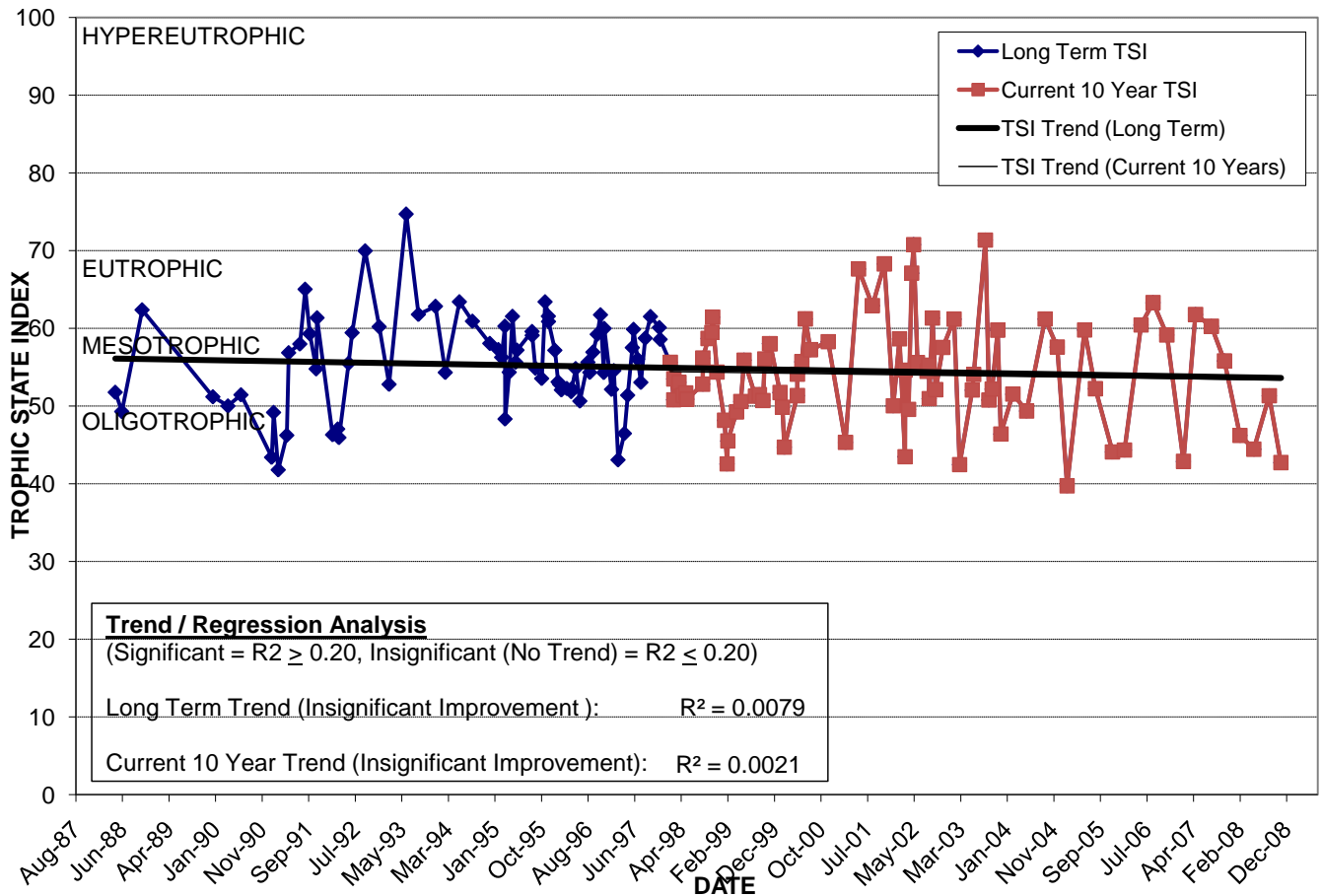
# LAKE ESTELLE WEST

Location: Lat **N 28° 34' 29.6"** Long **W 81° 22' 01.2"**  
 Section **13** Township **22S** Range **29E**  
 Lake Surface Area: **24 acres**  
 Lake Volume: **12,077,500 ft<sup>3</sup>**  
 Shoreline Length: **4,960 ft (1,511 m)**  
 Mean Depth: **11.4 ft (3.5 m)**  
 Maximum Depth: **23.7 ft (7.2 m)**

Water Management District: **St. Johns River**  
 Drainage Code: **SJ-HB-22**  
 Drainage Basin Area: **183 acres \***  
 Land Use: **33% Res, 40% Com, 23% Vac \***  
 Drain Wells: **1** Aeration: **Yes** (installed 7/03)  
 Lake Origin: **Natural**  
 Grass Carp (*Ctenopharyngodon idella*): **Yes**

<b>2008 Water Quality Data</b>		<b>TSI Ranking: 35 (out of 95 lakes)</b>			
	Total Phosphorus (mg/l)	Total Nitrogen (mg/l)	Secchi Depth (m)	Chlorophyll-a (mg/m3)	Trophic State Index
Minimum	0.023	0.74	1.3	5.8	43
Maximum	0.031	0.76	2.0	12.5	51
Average	0.027	0.75	1.7	8	46

**Long-Term Trophic State Index Values and Linear Regression Trend Line**



**Comments:** \* Numbers are for total lake, east and west lobes. This report treats Lake Estelle as two separate lakes for water quality purposes only.

**Location:** Split by Mills Ave. (US 17-92) between Rollins St. and Dorchester St., adjacent to (east of) Florida Hospital.