

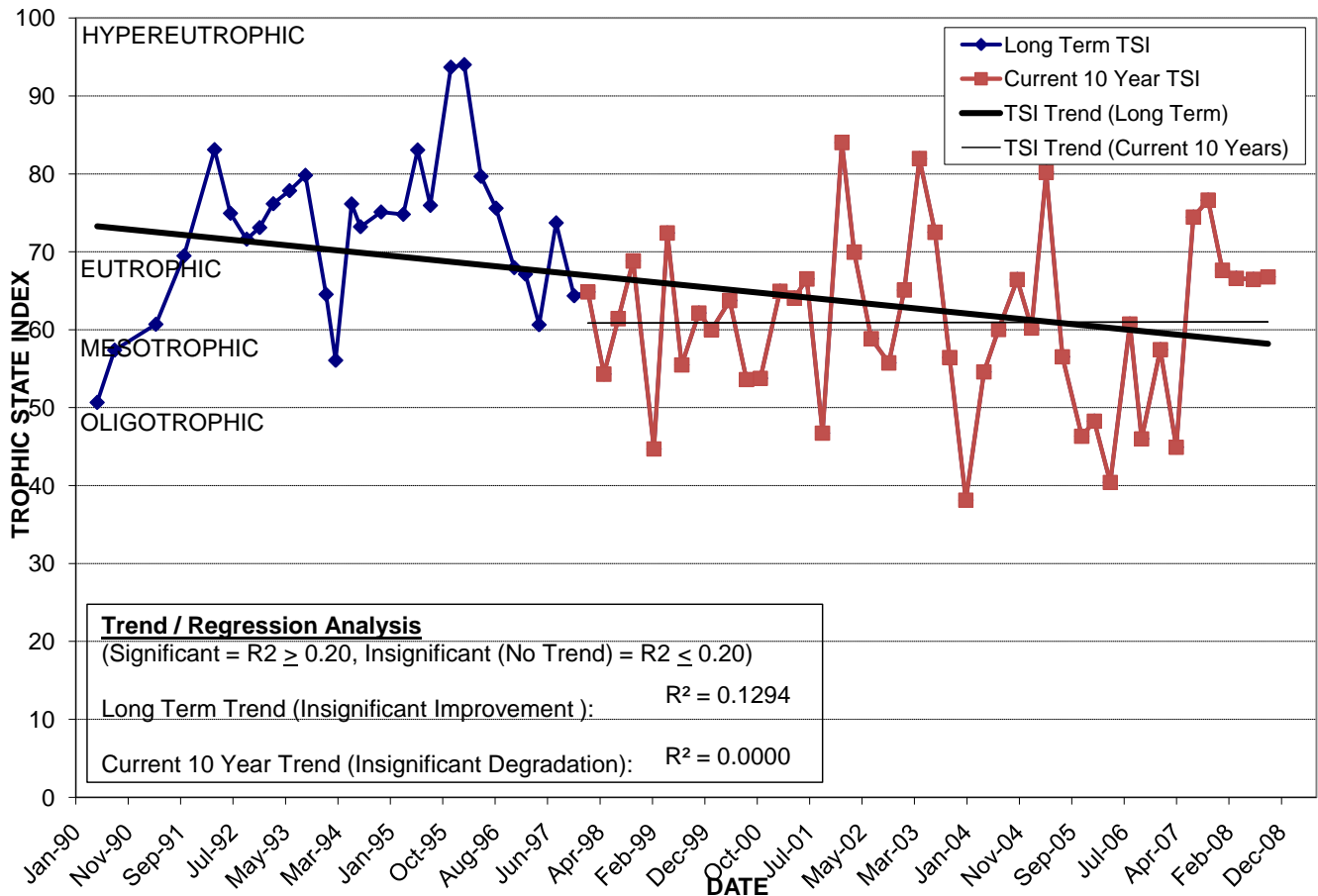
LAKE FAIRHOPE

Location: Lat **N 28° 35' 03.1"** Long **W 81° 23' 37.3"**
 Section **11** Township **22S** Range **29E**
 Lake Surface Area: **1 acre**
 Lake Volume: **115,600 ft³**
 Shoreline Length: **935 ft (285 m)**
 Mean Depth: **2.4 ft (0.7 m)**
 Maximum Depth: **4.1 ft (1.2 m)**

Water Management District: **St. Johns River**
 Drainage Code: **SJ-LW-7**
 Drainage Basin Area: **19 acres**
 Land Use: **53% Res, 12% Com, 5% Vac**
 Drain Wells: **No** Aeration: **No**
 Lake Origin: **Natural**
 Grass Carp (*Ctenopharyngodon idella*): **No**

2008 Water Quality Data		TSI Ranking: 90 (out of 95 lakes)			
	Total Phosphorus (mg/l)	Total Nitrogen (mg/l)	Secchi Depth (m)	Chlorophyll-a (mg/m3)	Trophic State Index
Minimum	0.094	1.28	0.7	29.6	66
Maximum	0.146	1.67	0.9	39.4	68
Average	0.126	1.43	0.8	33.5	67

Long-Term Trophic State Index Values and Linear Regression Trend Line



Comments: Water quality appears to fluctuate with vegetation levels.

Location: Approximately 0.1 miles northwest of the Maury Rd. and Edgewater Dr. intersection in the Palomar neighborhood.