

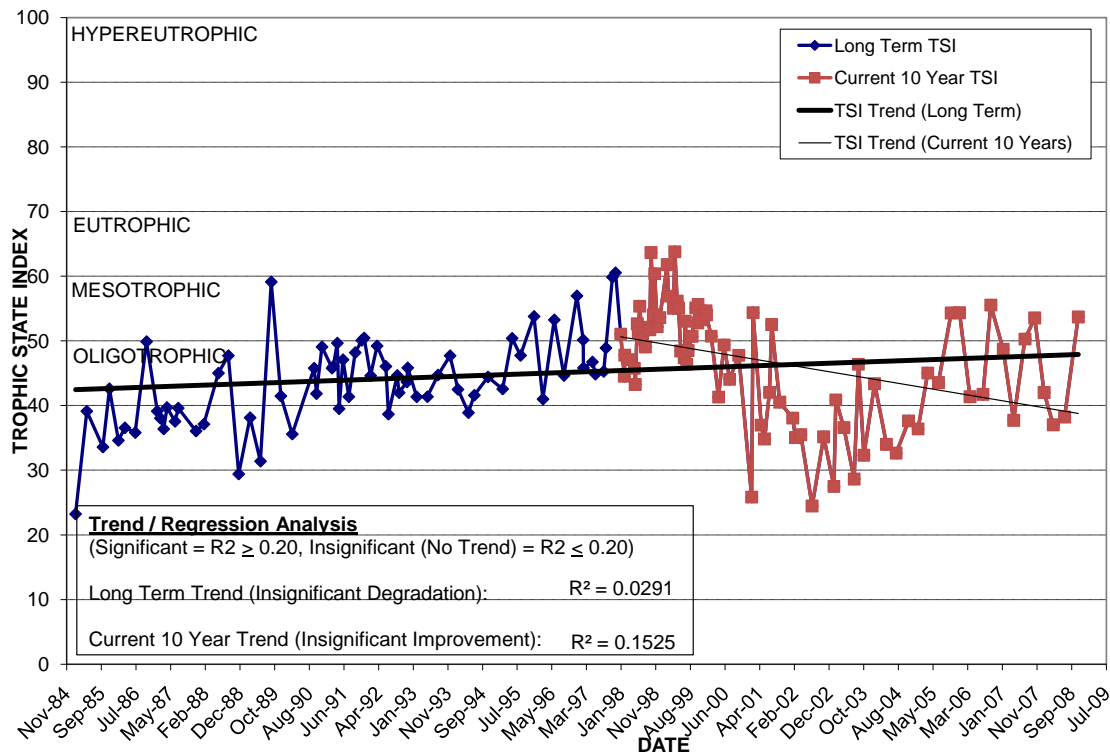
LAKE FAIRVIEW

Location: Lat **N 28° 35' 49.2"** Long **W 81° 24' 18.4"**
 Section **10** Township **22S** Range **29E**
 Lake Surface Area: **397 acres**
 Lake Volume: **205,000,000 ft³**
 Shoreline Length: **28,612 ft (8,721 m)**
 Mean Depth: **11.8 ft (3.6 m)**
 Maximum Depth:

Water Management District: **St. Johns River**
 Drainage Code: **SJ-LW-4**
 Drainage Basin Area: **1,324 acres**
 Land Use: **28% Res, 27% Com, 29% Vac**
 Drain Wells: **1** Aeration: **No**
 Lake Origin: **Natural**
 Grass Carp (*Ctenopharyngodon idella*): **Yes**

2008 Water Quality Data		TSI Ranking: 31 (out of 95 lakes)			
	Total Phosphorus (mg/l)	Total Nitrogen (mg/l)	Secchi Depth (m)	Chlorophyll-a (mg/m ³)	Trophic State Index
Minimum	0.012	0.68	1.0	3.5	37
Maximum	0.019	0.96	2.0	14.9	54
Average	0.015	0.79	1.7	7.4	43

Long-Term Trophic State Index Values and Linear Regression Trend Line



Comments: History of high bacterial levels. Study in 1998 indicated roosting seagulls were source of elevated bacteria. Bird dispersal program in 1998 eliminated bacteria problem. Elimination of seagulls and re-establishment of native plant community following reduction of grass carp population appears to have resulted in improved water quality.

Location: Bordered by Lee Rd. (on the north), Orange Blossom Trail – US 441 (on the west) and Edgewater Dr. (on parts of the east).