

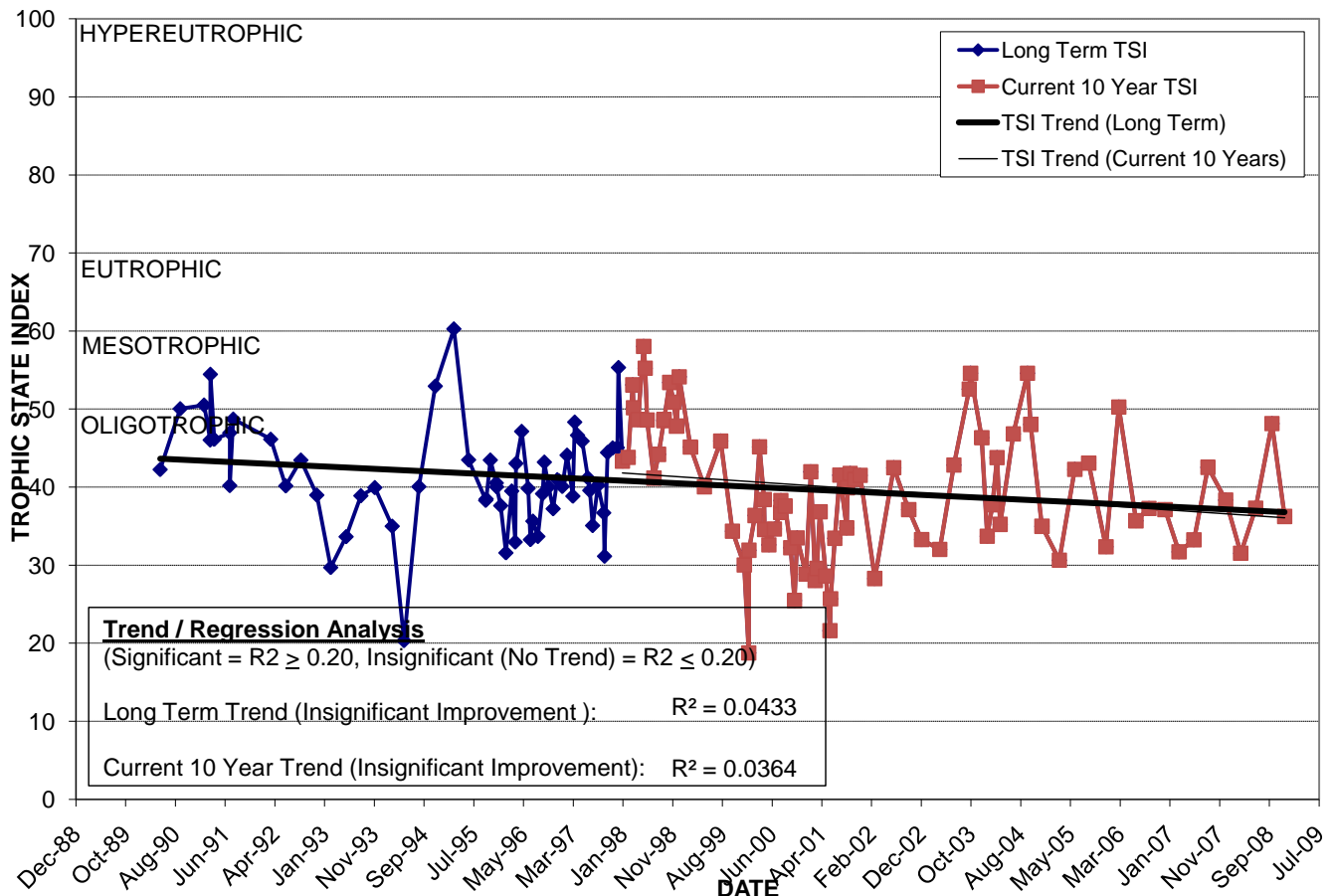
LAKE FARRAR

Location: Lat **N 28° 30' 29.9"** Long **W 81° 19' 14.9"**
 Section **9** Township **23S** Range **30E**
 Lake Surface Area: **8 acres**
 Lake Volume: **3,800,000 ft³**
 Shoreline Length: **2,344 ft (714 m)**
 Mean Depth: **10.8 ft (3.3 m)**
 Maximum Depth:

Water Management District: **St. Johns River**
 Drainage Code: **KR-BC-7**
 Drainage Basin Area: **78 acres**
 Land Use: **62% Res, 1% Com, 16% Vac**
 Drain Wells: **No** Aeration: **No**
 Lake Origin: **Natural**
 Grass Carp (*Ctenopharyngodon idella*): **Yes**

2008 Water Quality Data		TSI Ranking: 18 (out of 95 lakes)			
	Total Phosphorus (mg/l)	Total Nitrogen (mg/l)	Secchi Depth (m)	Chlorophyll-a (mg/m3)	Trophic State Index
Minimum	0.013	0.56	1.1	3.3	32
Maximum	0.015	1.27	3.6	8.9	48
Average	0.014	0.88	2.3	5.0	38

Long-Term Trophic State Index Values and Linear Regression Trend Line



Comments: Interconnect to Lake Porter was completed in 1998 and may be improving water quality by increasing flushing rate.

Location: North of Ashford Blvd. between Windy Wood Dr. and Chatsworth Ln. in the Bryn Mawr Neighborhood.