

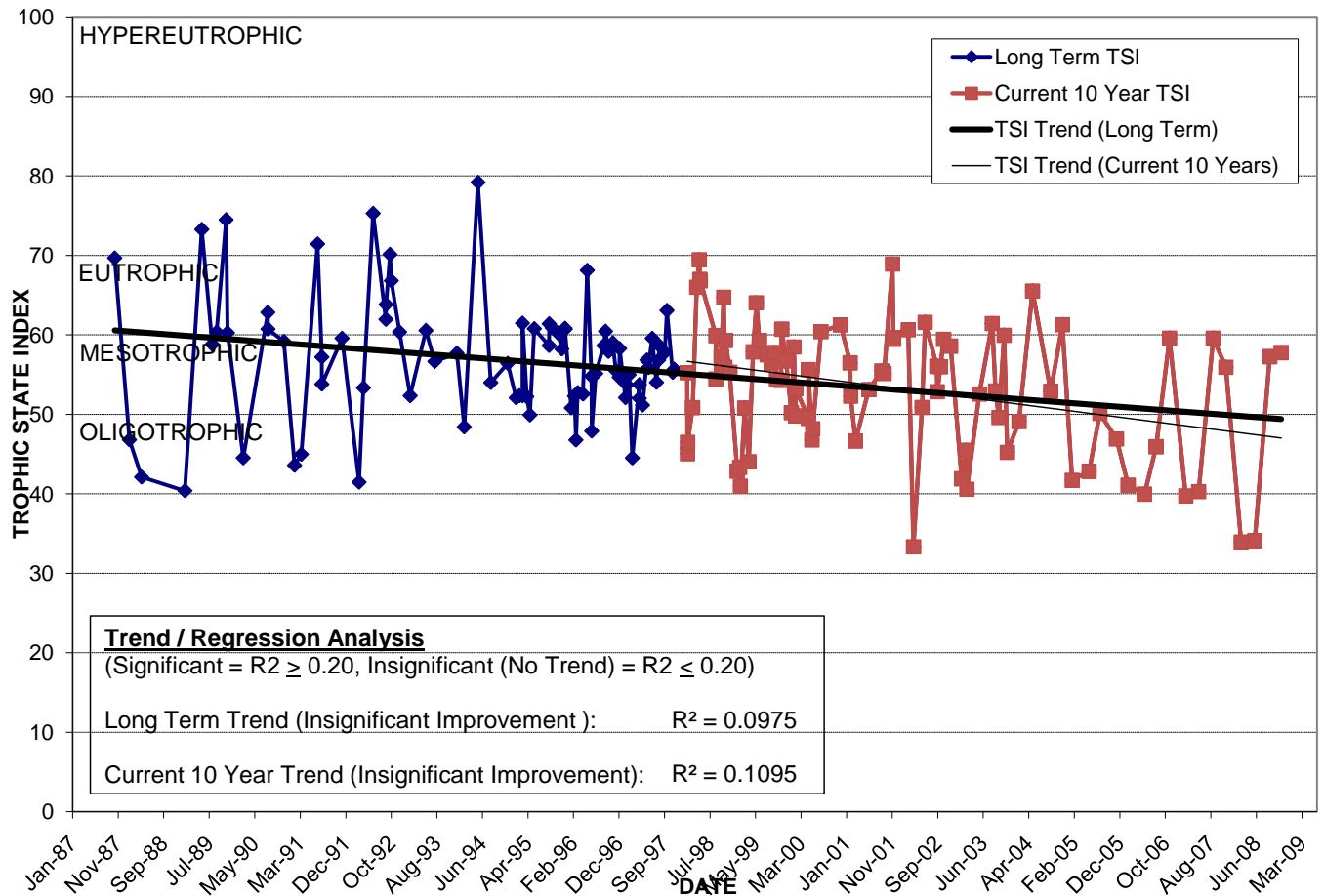
# LAKE FORMOSA

Location: Lat **N 28° 34' 07.3"** Long **W 81° 22' 02.6"**  
 Section **13** Township **22S** Range **29E**  
 Lake Surface Area: **33 acres**  
 Lake Volume: **19,700,000 ft<sup>3</sup>**  
 Shoreline Length: **7,029 ft (2,142 m)**  
 Mean Depth: **13.7 ft (4.2 m)**  
 Maximum Depth:

Water Management District: **St. Johns River**  
 Drainage Code: **SJ-HB-24**  
 Drainage Basin Area: **161 acres**  
 Land Use: **26% Res, 20% Com, 13% Vac**  
 Drain Wells: **No** Aeration: **No**  
 Lake Origin: **Natural**  
 Grass Carp (*Ctenopharyngodon idella*): **Yes**

2008 Water Quality Data		TSI Ranking: 41 (out of 95 lakes)			
	Total Phosphorus (mg/l)	Total Nitrogen (mg/l)	Secchi Depth (m)	Chlorophyll-a (mg/m3)	Trophic State Index
Minimum	0.018	0.62	0.9	2.0	34
Maximum	0.034	1.06	2.9	16.4	58
Average	0.025	0.83	1.8	8.3	47

**Long-Term Trophic State Index Values and Linear Regression Trend Line**



**Comments:** High variation in water quality appears to be related to rainfall that results in a flushing effect by inflows from upstream Lake Ivanhoe. Modifications to outfall structure in Lake Ivanhoe in 2000 will increase flows to Lake Formosa and should improve water quality.

**Location:** East of Alden Rd. between North Formosa Dr. and South Formosa Dr.