

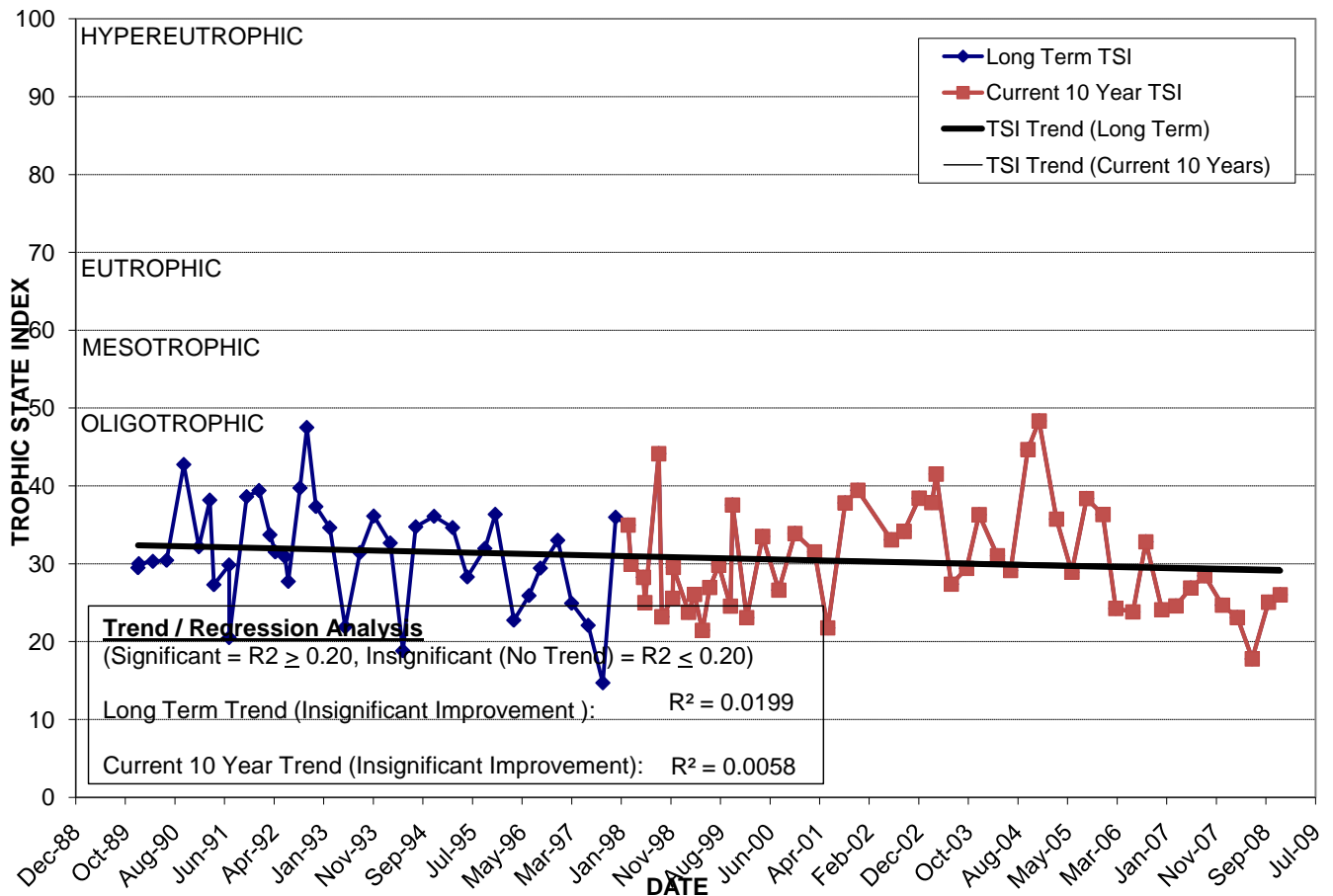
# LAKE FREDRICA

Location: Lat **N 28° 30' 30.2"** Long **W 81° 18' 25.9"**  
 Section **10** Township **23S** Range **30E**  
 Lake Surface Area: **65 acres**  
 Lake Volume: **34,600,000 ft<sup>3</sup>**  
 Shoreline Length: **6,229 ft (1,899 m)**  
 Mean Depth: **12.2 ft (3.7 m)**  
 Maximum Depth:

Water Management District: **St. Johns River**  
 Drainage Code: **SJ-LE-39**  
 Drainage Basin Area: **475 acres**  
 Land Use: **42% Res, 19% Com, 27% Vac**  
 Drain Wells: **No** Aeration: **No**  
 Lake Origin: **Natural**  
 Grass Carp (*Ctenopharyngodon idella*): **No**

2008 Water Quality Data		TSI Ranking: 1 (out of 95 lakes)			
	Total Phosphorus (mg/l)	Total Nitrogen (mg/l)	Secchi Depth (m)	Chlorophyll-a (mg/m <sup>3</sup> )	Trophic State Index
Minimum	0.008	0.55	3.8	0.9	18
Maximum	0.009	0.86	4.9	2.8	26
Average	0.009	0.65	4.1	1.9	23

**Long-Term Trophic State Index Values and Linear Regression Trend Line**



**Comments:** Consistently ranks as one of Orlando's cleanest lakes.

**Location:** Adjacent to S Semoran Bv – SR 436. (on the east side) between Lake Margaret Dr. and Michigan Ave.