

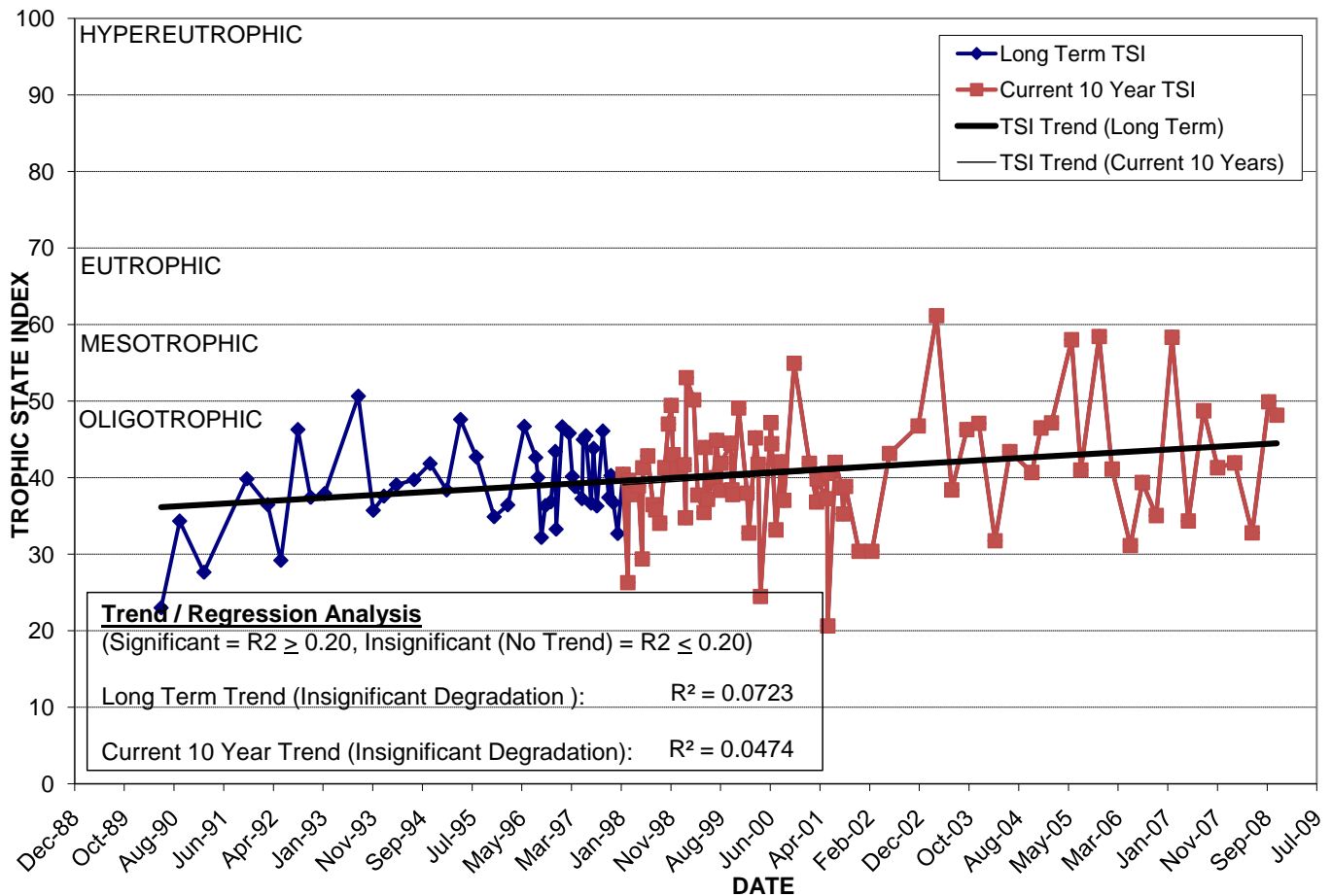
LAKE GEAR

Location: Lat **N 28° 33' 23.0"** Long **W 81° 19' 49.4"**
 Section **20** Township **22S** Range **30E**
 Lake Surface Area: **6 acres**
 Lake Volume: **5,400,000 ft³**
 Shoreline Length: **2,383 ft (726 m)**
 Mean Depth: **19.9 ft (6.1 m)**
 Maximum Depth:

Water Management District: **St. Johns River**
 Drainage Code: **SJ-LE-6**
 Drainage Basin Area: **45 acres**
 Land Use: **24% Res, 27% com, 39% Vac**
 Drain Wells: **1** Aeration: **No**
 Lake Origin: **Excavation**
 Grass Carp (*Ctenopharyngodon idella*): **No**

| 2008 Water Quality Data | | TSI Ranking: 27 (out of 95 lakes) | | | |
|--------------------------------|----------------------------|--|---------------------|--------------------------|------------------------|
| | Total Phosphorus (mg/l) | Total Nitrogen (mg/l) | Secchi Depth (m) | Chlorophyll-a (mg/m3) | Trophic State Index |
| Minimum | 0.026 | 0.88 | 1.4 | 1.4 | 33 |
| Maximum | 0.046 | 1.24 | 3.4 | 8.2 | 50 |
| Average | 0.034 | 1.01 | 2.3 | 5.0 | 42 |

Long-Term Trophic State Index Values and Linear Regression Trend Line



Comments: Adjacent to the Cady Way Trail, near Baldwin Park Neighborhood

Location: Approximately 0.2 miles east of Bennet Rd., just north of E Colonial Dr.