

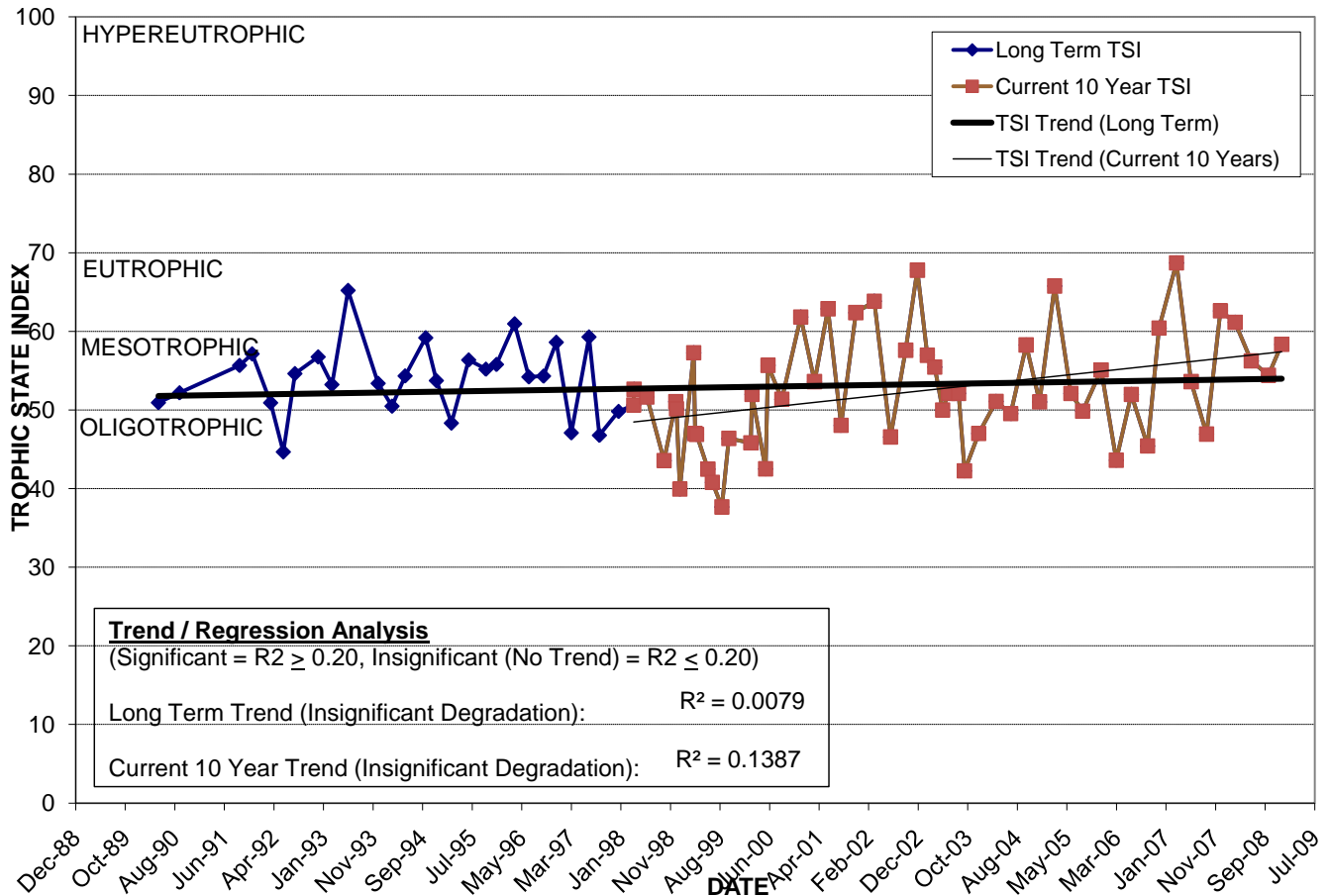
# LAKE GEM MARY

Location: Lat **N 28° 29' 43.4"** Long **W 81° 21' 55.8"**  
 Section **12** Township **23S** Range **29E**  
 Lake Surface Area: **14 acres**  
 Lake Volume: **10,750,200 ft<sup>3</sup>**  
 Shoreline Length: **2,800 ft (853 m)**  
 Mean Depth: **17.9 ft (5.5 m)**  
 Maximum Depth: **33.5 ft (10.2 m)**

Water Management District: **St. Johns River**  
 Drainage Code: **SF-BC**  
 Drainage Basin Area: **No Data**  
 Land Use: **Mostly Res**  
 Drain Wells: **1** Aeration: **No**  
 Lake Origin: **Natural**  
 Grass Carp (*Ctenopharyngodon idella*): **No**

2008 Water Quality Data		TSI Ranking: 70 (out of 95 lakes)			
	Total Phosphorus (mg/l)	Total Nitrogen (mg/l)	Secchi Depth (m)	Chlorophyll-a (mg/m3)	Trophic State Index
Minimum	0.024	1.08	0.8	8.6	54
Maximum	0.031	1.53	0.9	22.8	61
Average	0.028	1.35	0.9	15.7	58

**Long-Term Trophic State Index Values and Linear Regression Trend Line**



**Comments:** This is a deep lake that the Navy controlled water levels for research purposes until 1998.

**Location:** Just north of Gatlin Rd. between Summerlin Ave. and Lake Gem Circle.