

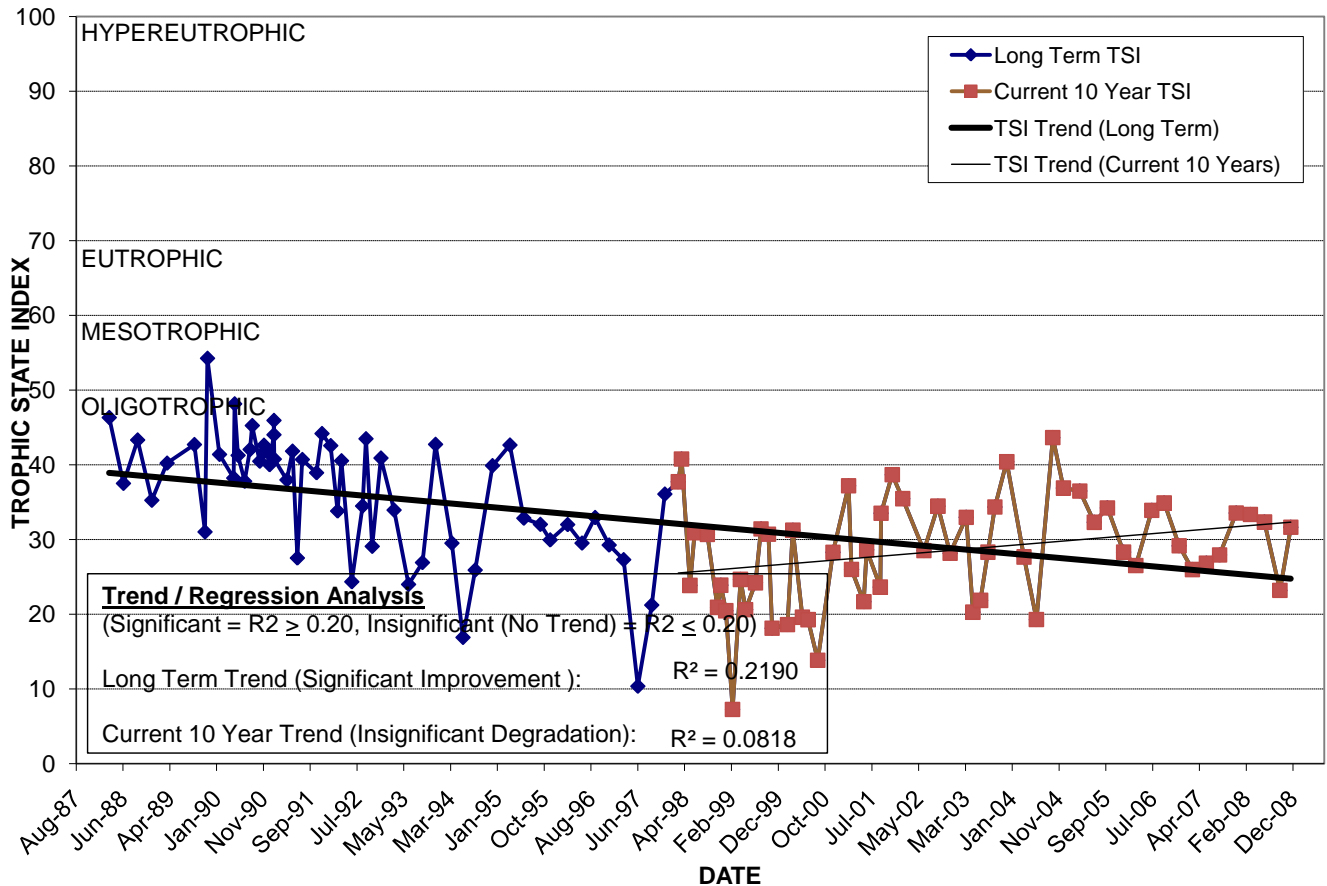
# LAKE GEORGE

Location: Lat **N 28° 30' 02.5"** Long **W 81° 19' 04.4"**  
 Section **9** Township **23S** Range **30E**  
 Lake Surface Area: **73 acres**  
 Lake Volume: **40,000,000 ft<sup>3</sup>**  
 Shoreline Length: **8,113 ft (2,473 m)**  
 Mean Depth: **12.6 ft (3.8 m)**  
 Maximum Depth:

Water Management District: **St. Johns River**  
 Drainage Code: **KR-BC-6**  
 Drainage Basin Area: **454 acres**  
 Land Use: **46% Res, 14% Com, 30% Vac**  
 Drain Wells: **No** Aeration: **No**  
 Lake Origin: **Natural**  
 Grass Carp (*Ctenopharyngodon idella*): **No**

2008 Water Quality Data		TSI Ranking: 6 (out of 95 lakes)			
	Total Phosphorus (mg/l)	Total Nitrogen (mg/l)	Secchi Depth (m)	Chlorophyll-a (mg/m3)	Trophic State Index
Minimum	0.007	0.52	2.1	1.4	23
Maximum	0.012	0.66	3.1	4.5	33
Average	0.010	0.60	2.8	2.9	31

**Long-Term Trophic State Index Values and Linear Regression Trend Line**



**Comments:** Water levels rose dramatically in recent years due to a plugged drain well. Increased water levels appear to have resulted in water quality improvements.

**Location:** West of Dixie Belle Dr. between Lake Margaret Dr. and Gatlin Ave.