

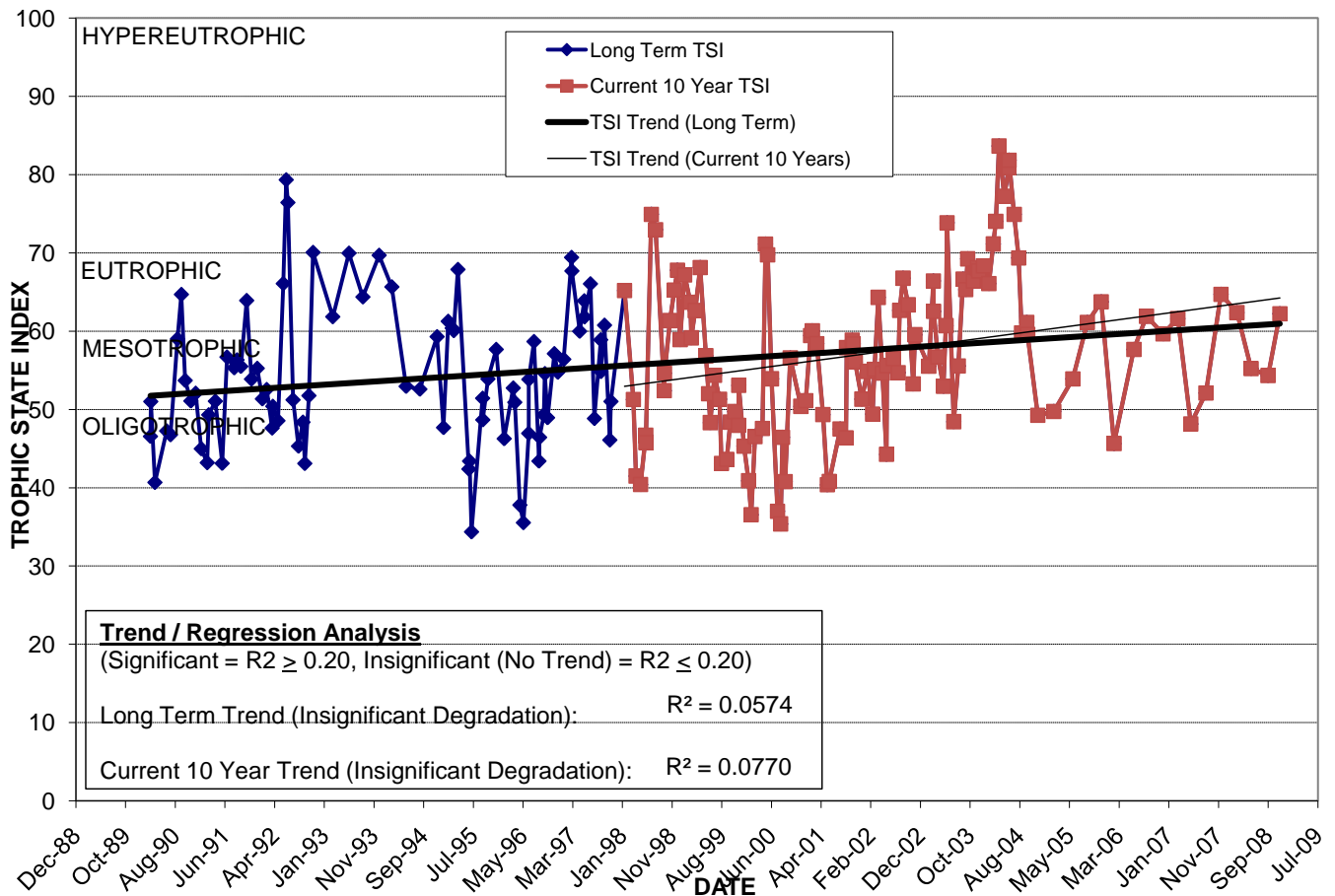
LAKE GILES

Location: Lat **N 28° 31' 48.4"** Long **W 81° 20' 03.1"**
 Section **32** Township **22S** Range **30E**
 Lake Surface Area: **29 acres**
 Lake Volume: **22,214,376 ft³**
 Shoreline Length: **4,163 ft (1,269 m)**
 Mean Depth: **17.8 ft (5.4 m)**
 Maximum Depth: **36.6 ft (11.2 m)**

Water Management District: **St. Johns River**
 Drainage Code: **SJ-LE-11**
 Drainage Basin Area: **265 acres**
 Land Use: **76% Res, 7% Com, 1% Vac**
 Drain Wells: **1** Aeration: **No**
 Lake Origin: **Natural**
 Grass Carp (*Ctenopharyngodon idella*): **No**

2008 Water Quality Data		TSI Ranking: 73 (out of 95 lakes)			
	Total Phosphorus (mg/l)	Total Nitrogen (mg/l)	Secchi Depth (m)	Chlorophyll-a (mg/m3)	Trophic State Index
Minimum	0.025	0.94	0.7	11.3	54
Maximum	0.047	1.40	1.1	41.2	62
Average	0.033	1.16	1.0	20.6	60

Long-Term Trophic State Index Values and Linear Regression Trend Line



Comments: First Orlando lake to join the Florida LAKEWATCH program in 1990.

Location: At the very south end of Springview Dr. off Lake Underhill Rd. in the Dover Shores West neighborhood.