

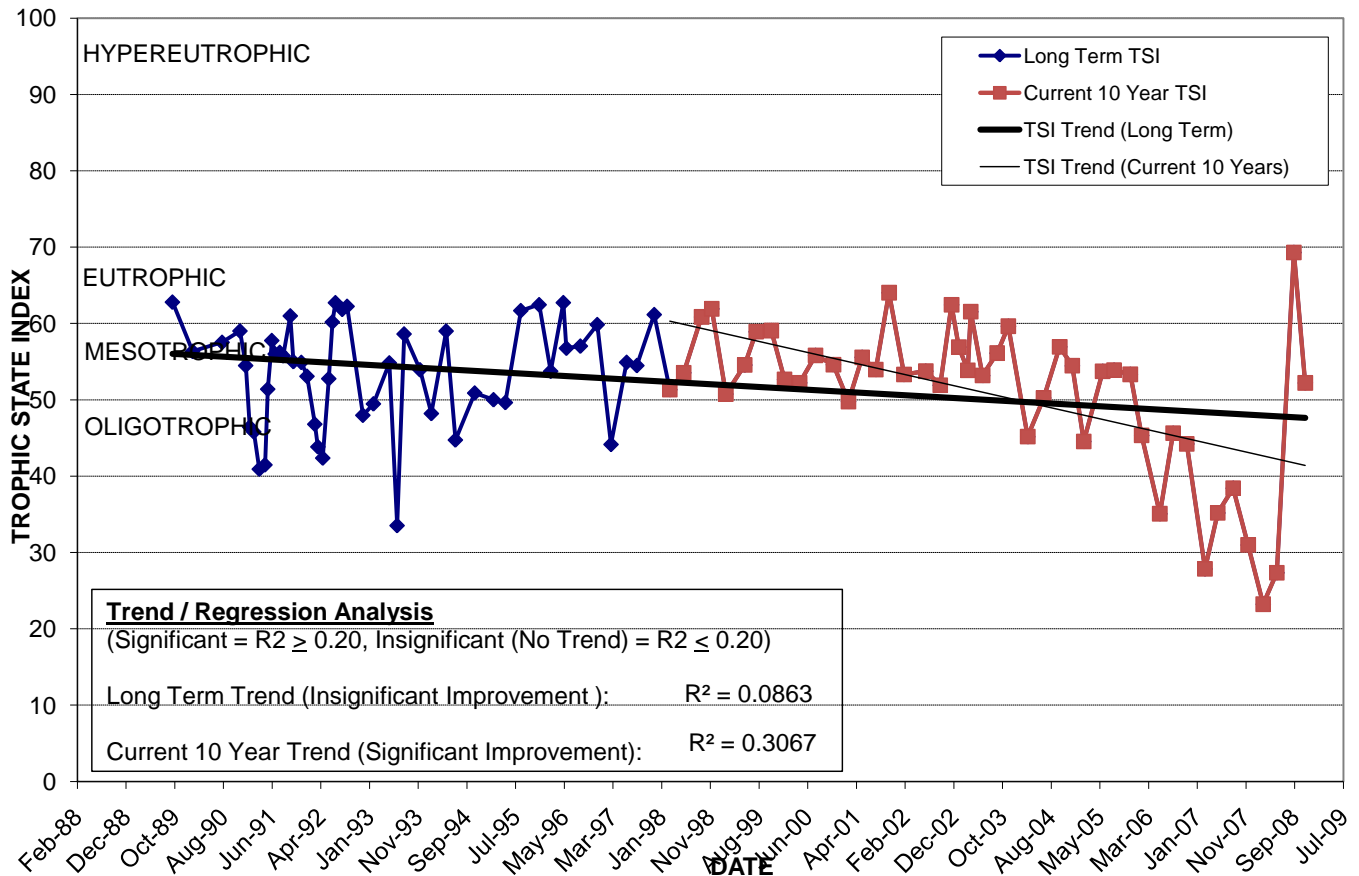
LAKE HIGHLAND

Location: Lat **N 28° 33' 37.4"** Long **W 81° 22' 16.3"**
 Section **24** Township **22S** Range **29E**
 Lake Surface Area: **33 acres**
 Lake Volume: **13,500,000 ft³**
 Shoreline Length: **5,462 ft (1,665 m)**
 Mean Depth: **9.4 ft (2.9 m)**
 Maximum Depth:

Water Management District: **St. Johns River**
 Drainage Code: **SJ-HB-30**
 Drainage Basin Area: **296 acres**
 Land Use: **38% Res, 24% Com, 13% Vac**
 Drain Wells: **No** Aeration: **No**
 Lake Origin: **Natural**
 Grass Carp (*Ctenopharyngodon idella*): **Yes**

2008 Water Quality Data		TSI Ranking: 38 (out of 95 lakes)			
	Total Phosphorus (mg/l)	Total Nitrogen (mg/l)	Secchi Depth (m)	Chlorophyll-a (mg/m3)	Trophic State Index
Minimum	0.015	0.47	0.7	1.0	23
Maximum	0.070	1.49	4.9	57.2	69
Average	0.042	0.90	2.9	19.9	47

Long-Term Trophic State Index Values and Linear Regression Trend Line



Comments: Trichloroethene levels are monitored on Lake Highland quarterly to determine if the chemical is entering the lake from a nearby contaminated groundwater site.

Location: South of Lake Highland Dr. between Highland Ave. and Terrace Blvd. in the vicinity of the east end of Lake Ivanhoe.