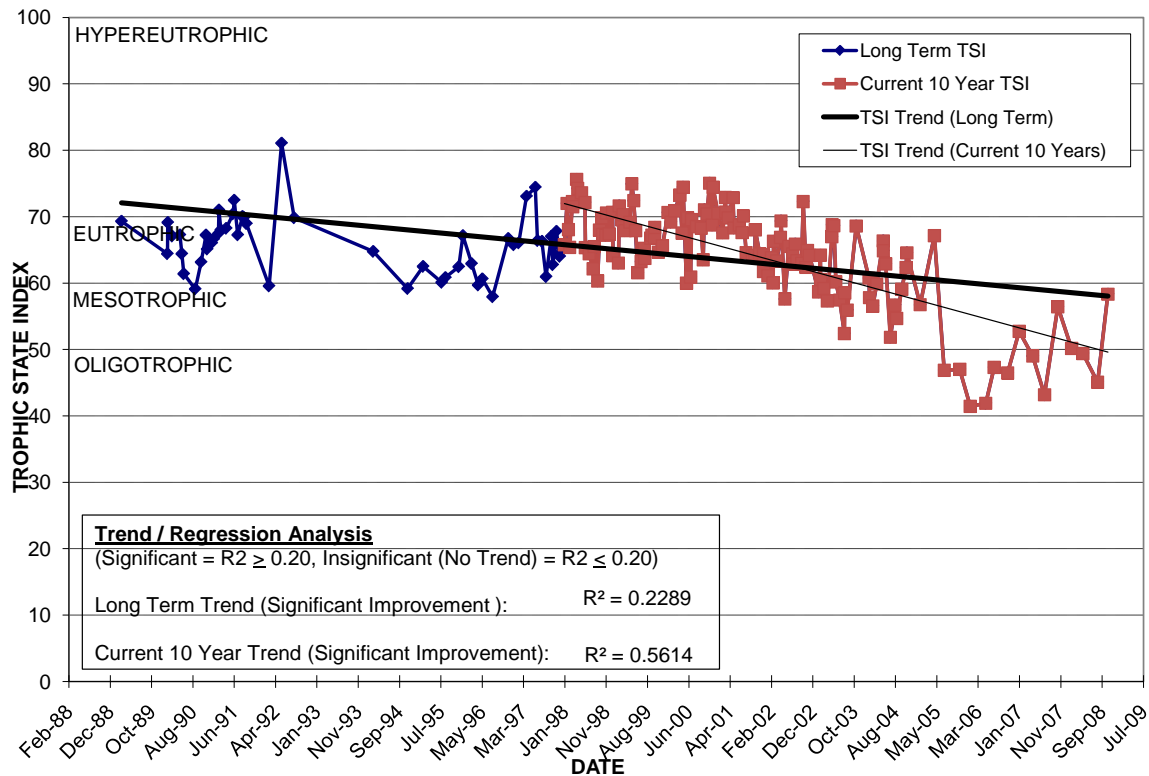


LAKE HOLDEN

Location: Lat N 28° 30' 28.4" Long W 81° 23' 12.1" Section 11 Township 23N Range 29E Lake Surface Area: 263 acres Lake Volume: 147,380,800 ft³ Shoreline Length: 55,650 ft (16,967 m) Mean Depth: 12.9 ft (3.9 m) Maximum Depth: 30 ft (9.1 m)	Water Management District: St. Johns River Drainage Code: SF-BC Drainage Basin Area: 741 acres Land Use: 50% Res, 41% Com, 8% Vac Drain Wells: No Aeration: No Lake Origin: Natural Grass Carp (<i>Ctenopharyngodon idella</i>): Yes
---	--

2008 Water Quality Data		TSI Ranking: 49 (out of 95 lakes)			
	Total Phosphorus (mg/l)	Total Nitrogen (mg/l)	Secchi Depth (m)	Chlorophyll-a (mg/m3)	Trophic State Index
Minimum	0.012	0.94	0.8	7.3	45
Maximum	0.023	1.18	1.1	18.3	58
Average	0.016	1.11	1.0	12.2	51

Long-Term Trophic State Index Values and Linear Regression Trend Line



Comments: Parcels on the Northeast border of the lake were recently annexed into the City of Orlando. City operates alum injection system for stormwater treatment.

Location: South of W. Michigan St., north of Gatlin Ave., east of S. Orange Blossom Trl.