

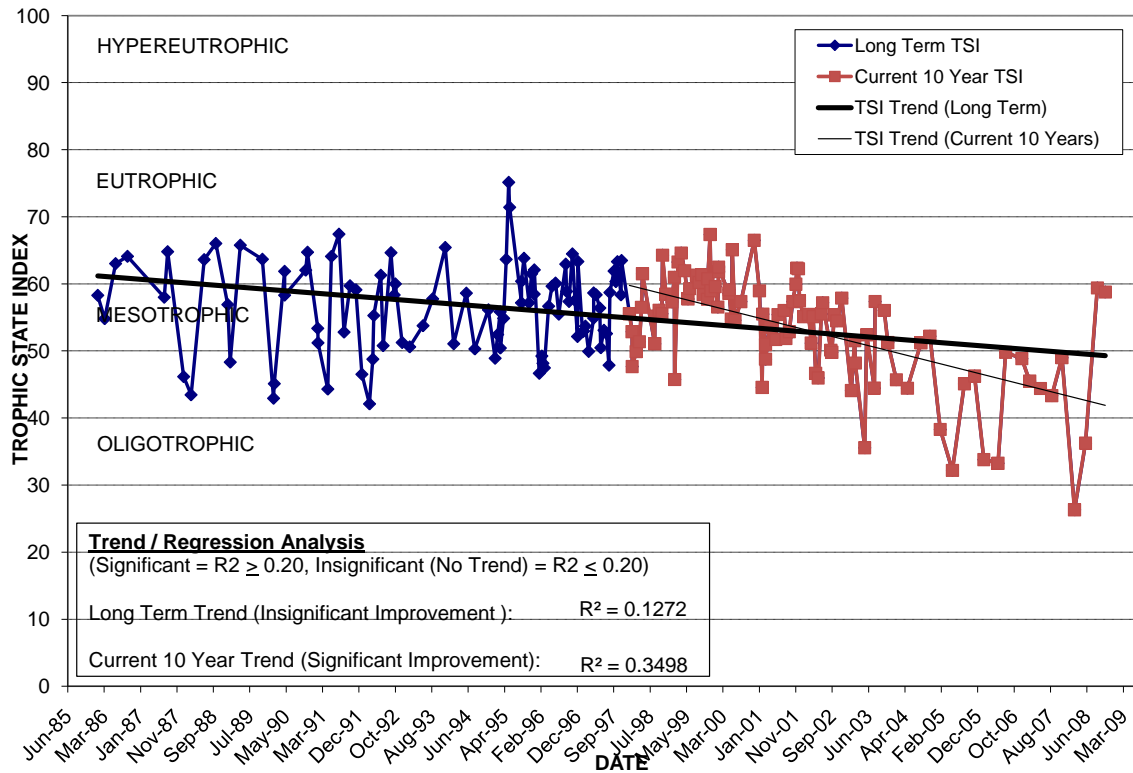
# LAKE IVANHOE EAST

Location: Lat **N 28° 33' 46.1"** Long **W 81° 22' 31.8"**  
 Section **23** Township **22S** Range **29E**  
 Lake Surface Area: **45 acres**  
 Lake Volume: **30,005,000 ft<sup>3</sup>**  
 Shoreline Length: **5,969 ft (1,819 m)**  
 Mean Depth: **15.2 ft (4.6 m)**  
 Maximum Depth: **27.1 ft (8.3 m)**

Water Management District: **St. Johns River**  
 Drainage Code: **SJ-HB-25**  
 Drainage Basin Area: **667 acres \***  
 Land Use: **37% Res, 12% Com, 20% Vac \***  
 Drain Wells: **1 \*** Aeration: **No**  
 Lake Origin: **Natural**  
 Grass Carp (*Ctenopharyngodon idella*): **Yes**

2008 Water Quality Data		TSI Ranking: 42 (out of 95 lakes)			
	Total Phosphorus (mg/l)	Total Nitrogen (mg/l)	Secchi Depth (m)	Chlorophyll-a (mg/m <sup>3</sup> )	Trophic State Index
Minimum	0.012	0.60	0.9	1.2	26
Maximum	0.026	0.94	3.3	29.8	59
Average	0.020	0.79	2.0	14.5	47

**Long-Term Trophic State Index Values and Linear Regression Trend Line**



**Comments:** \* Numbers are for total lake, east, middle, and west lobes. This report treats Lake Ivanhoe as three separate lakes for water quality purposes only. Popular recreational lake.

**Location:** Split by I-4 north of Colonial Dr. and south of Princeton Ave. and adjacent to Orange Ave.