

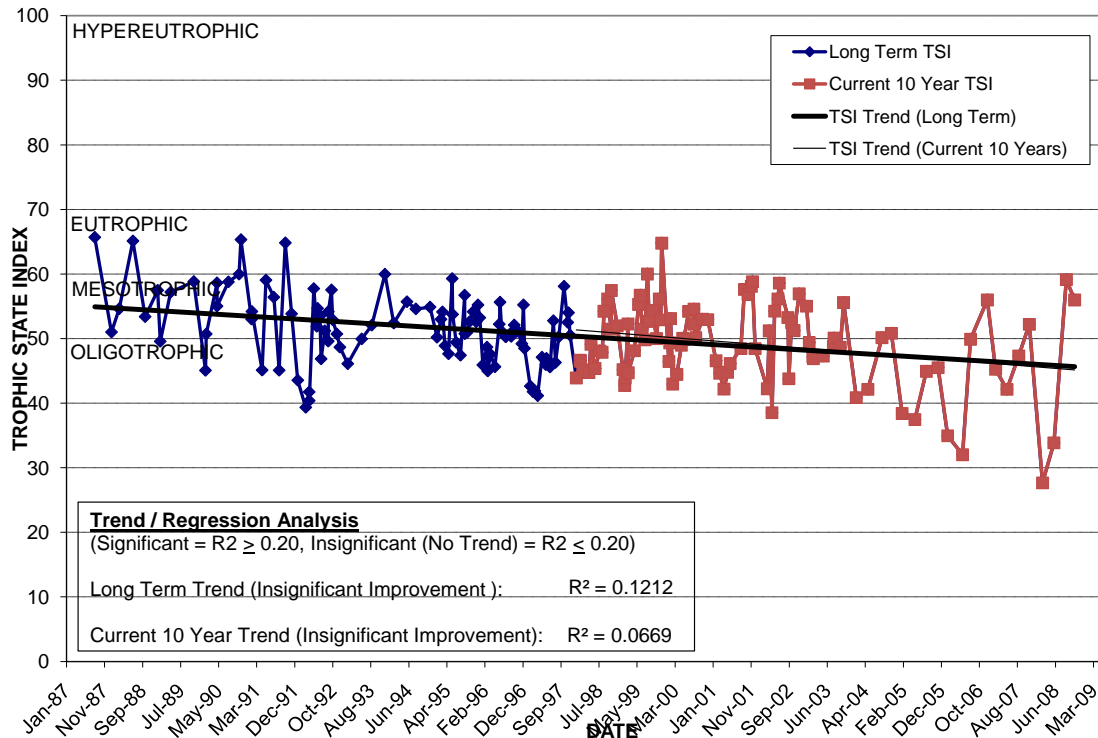
LAKE IVANHOE MIDDLE

Location: Lat **N 28° 33' 55.4"** Long **W 81° 22' 55.6"**
 Section **23** Township **22S** Range **29E**
 Lake Surface Area: **67 acres**
 Lake Volume: **48,643,700 ft³**
 Shoreline Length: **9,976 ft (3,040 m)**
 Mean Depth: **16.6 ft (5.1 m)**
 Maximum Depth: **31.4 ft (9.6 m)**

Water Management District: **St. Johns River**
 Drainage Code: **SJ-HB-25**
 Drainage Basin Area: **667 acres ***
 Land Use: **37% Res, 12% Com, 20% Vac ***
 Drain Wells: **1 *** Aeration: **Yes** (installed 6/92)
 Lake Origin: **Natural**
 Grass Carp (*Ctenopharyngodon idella*): **Yes**

2008 Water Quality Data		TSI Ranking: 44 (out of 95 lakes)			
	Total Phosphorus (mg/l)	Total Nitrogen (mg/l)	Secchi Depth (m)	Chlorophyll-a (mg/m3)	Trophic State Index
Minimum	0.009	0.56	1.1	1.5	28
Maximum	0.028	1.09	3.5	31.0	59
Average	0.019	0.81	1.9	16.7	48

Long-term Trophic State Index Values and Linear Regression Trend Line



Comments: * Numbers are for total lake, east, middle, and west lobes. This report treats Lake Ivanhoe as three separate lakes for water quality purposes only. Popular recreational lake.

Location: Split by I-4 north of Colonial Dr. and south of Princeton Ave. and adjacent to Orange Ave.