

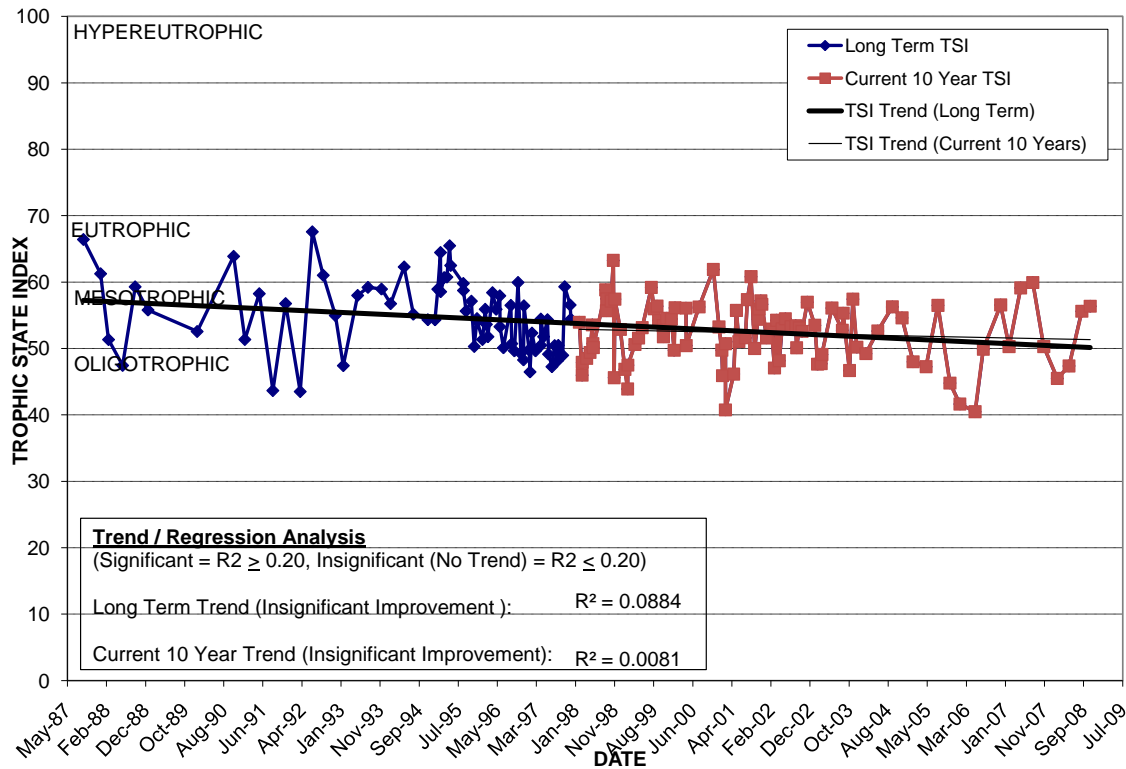
LAKE IVANHOE WEST

Location: Lat **N 28° 34' 00.5"** Long **W 81° 23' 07.1"**
 Section **23** Township **22S** Range **29E**
 Lake Surface Area: **14 acres**
 Lake Volume: **11,619,000 ft³**
 Shoreline Length: **3,002 ft (915 m)**
 Mean Depth: **19.1 ft (5.8 m)**
 Maximum Depth: **27.8 ft (8.5 m)**

Water Management District: **St. Johns River**
 Drainage Code: **SJ-HB-25**
 Drainage Basin Area: **667 acres ***
 Land Use: **37% Res, 12% Com, 20% Vac ***
 Drain Wells: **1 *** Aeration: **Yes** (installed 11/86)
 Lake Origin: **Natural**
 Grass Carp (*Ctenopharyngodon idella*): **Yes**

2008 Water Quality Data		TSI Ranking: 50 (out of 95 lakes)			
	Total Phosphorus (mg/l)	Total Nitrogen (mg/l)	Secchi Depth (m)	Chlorophyll-a (mg/m3)	Trophic State Index
Minimum	0.019	0.64	1.1	9.1	45
Maximum	0.033	0.81	1.8	27.1	56
Average	0.028	0.76	1.5	18.0	51

Long-Term Trophic State Index Values and Linear Regression Trend Line



Comments: * Numbers are for total lake, east, middle, and west lobes. This report treats Lake Ivanhoe as three separate lakes for water quality purposes only. Popular recreational lake.

Location: Split by I-4 north of Colonial Dr. and south of Princeton Ave. and adjacent to Orange Ave.