

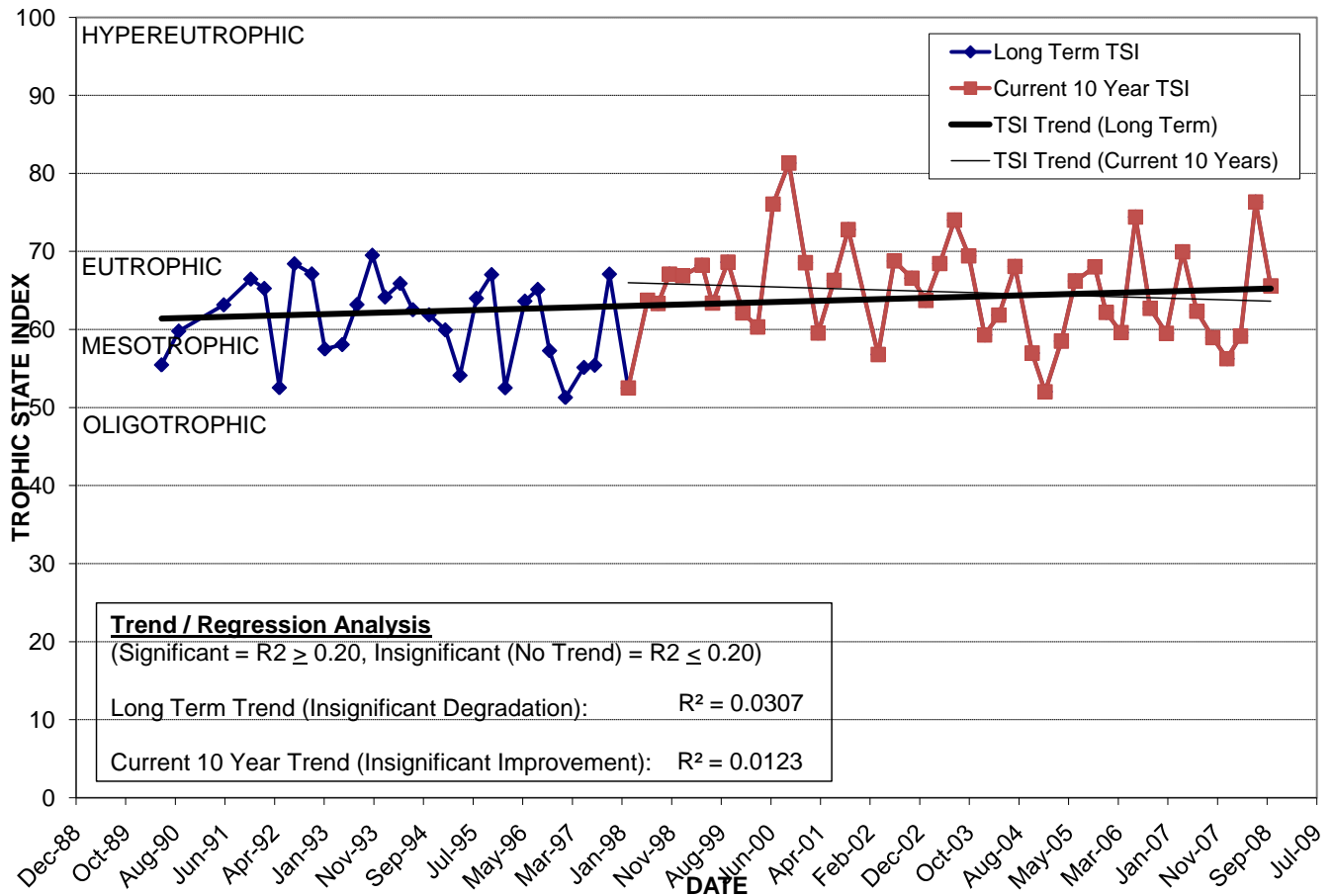
LAKE KASEY

Location: Lat **N 28° 35' 56.8"** Long **W 81° 26' 35.5"**
 Section **6** Township **22S** Range **29E**
 Lake Surface Area: **4 acres**
 Lake Volume: **1,441,476 ft³**
 Shoreline Length: **1,495 ft (456 m)**
 Mean Depth: **9.0 ft (2.7 m)**
 Maximum Depth: **13.1 ft (4.0 m)**

Water Management District: **St. Johns River**
 Drainage Code: **SJ-LW-14**
 Drainage Basin Area: **74 acres**
 Land Use: **51% Res, 6% Vac**
 Drain Wells: **No** Aeration: **No**
 Lake Origin: **Excavation**
 Grass Carp (*Ctenopharyngodon idella*): **Yes**

2008 Water Quality Data		TSI Ranking: 85 (out of 95 lakes)			
	Total Phosphorus (mg/l)	Total Nitrogen (mg/l)	Secchi Depth (m)	Chlorophyll-a (mg/m3)	Trophic State Index
Minimum	0.045	0.94	0.5	14.4	56
Maximum	0.067	2.29	1.1	52.9	76
Average	0.054	1.39	0.8	27.0	64

Long-Term Trophic State Index Values and Linear Regression Trend Line



Comments: This lake overflows to Lake Kristy to provide flood control to the Signal Hill neighborhood.

Location: In the Signal Hill neighborhood, bordered by Lighthouse Circle, east of Signal Hill Rd.