

Road Closure Status Report
(February 4, 2010)

Downtown Locations

The **Right Lane** on South Street approaching Rosalind Avenue has been converted to a **Right Turn Only Lane** due to construction associated with the First United Methodist Church. Through traffic should use the Left and Center Lanes.

The following streets will be closed on the dates and time listed for the “Orlando Downtown Art & Living Expo.” For event information, contact (407) 592-0002.

Eola Drive from Robinson Street to Washington Street (southbound direction only); Friday, February 19, 2010 at 2:00 p.m. until Sunday, February 21, 2010 at 6:00 p.m.

Eola Drive from Robinson Street to Washington Street (northbound direction only); Friday, February 19, 2010 at 6:00 p.m. until Sunday, February 21, 2010 at 6:00 p.m.

Washington Street from Eola Drive to the cul de sac; Friday, February 19, 2010 at 2:00 p.m. until Sunday, February 21, 2010 at 6:00 p.m.

Orange Avenue from South Street to Anderson Street and South Street from Boone Avenue to Magnolia (eastbound direction only) will be closed for the “Blues B Q” event. The closure will be in effect beginning Saturday, February 20, 2010 at 3:00 a.m. and remain in place until 4:00 a.m., Sunday, February 21, 2010. For event information, contact (407) 246-3720.

Eola Drive from Robinson Street to Washington Street (southbound direction only) will be closed beginning at 8:00 a.m. on Saturday, February 27, 2010 for the “Cointreau Chillounge Night.” The closure will remain in place until 3:00 a.m., Sunday, February 28, 2010. For event information, contact (941) 448-0995.

The Right Lane on Hughey Avenue from Washington Street to Central Boulevard is closed for construction activities at the Federal Courthouse. The closure is expected to remain in place until January 2012.

Event Center

South Street from Hughey Avenue to Division Avenue is restricted to one (1) lane in each direction due to construction of the Amway Center, Parking Garage and related roadway improvements. Please use caution while traveling through the area.

Division Avenue from Church Street to South Street is closed roadway improvements. A map of the closure area and suggested detour routes is attached to the end of this report. The closure is expected to remain in place until April 1, 2010.

Division Avenue from South Street to Anderson Street (southbound direction only) will be closed beginning Monday, February 1, 2010 for construction associated with the Division Avenue Streetscape project. The closure is expected to remain in place until April 1, 2010

Other Locations

Narcoossee Road from the Beachline (S.R. 528) to Leevista Boulevard is under construction due to road widening from two (2) lanes to four (4) lanes. Lane Closures and Traffic shifts are in effect. Please use caution as you travel thru the area. For additional information on this project, click on the following link.
http://www.cityoforlando.net/public_works/cityprojects/reports.aspx

Conway Road from Hoffner Road to S.R. 528 (Beachline Expressway) is under construction due to road widening from two (2) lanes to four (4) lanes. Lane Closures and Traffic shifts are in effect. Please use caution as you travel thru the area. For additional information on this project, click on the following link.
http://www.cityoforlando.net/public_works/cityprojects/reports.aspx

Regent Avenue from Silver Star Road to Ellman Street is closed for installation of underground utilities.
Projected opening date is April 15, 2010

Underwood Street from Kuhl Avenue to Orange Avenue is closed for construction associated with the expansion of ORHS.
Projected opening date is April 30, 2010

Sturtevant Street from Kuhl Avenue to Lucerne Terrace (westbound direction only) will be closed beginning Monday, February 8, 2010 for construction associated with the installation of underground utilities.
Projected opening date is March 8, 2010

New Broad Street from Jake Street to Welham Street and Welham Street from New Broad Street to Lake Baldwin Lane will be closed Saturday, March 6, 2010 from 9:00 a.m. until 11:00 p.m. for "The Food and Wine Festival @ Baldwin Park." For Event information, contact (407) 339-2978.

To obtain current construction information concerning Interstate 4 or S.R. 408 and S.R. 417 click on the appropriate link below.

I-4 Web Page <http://trans4mation.org>

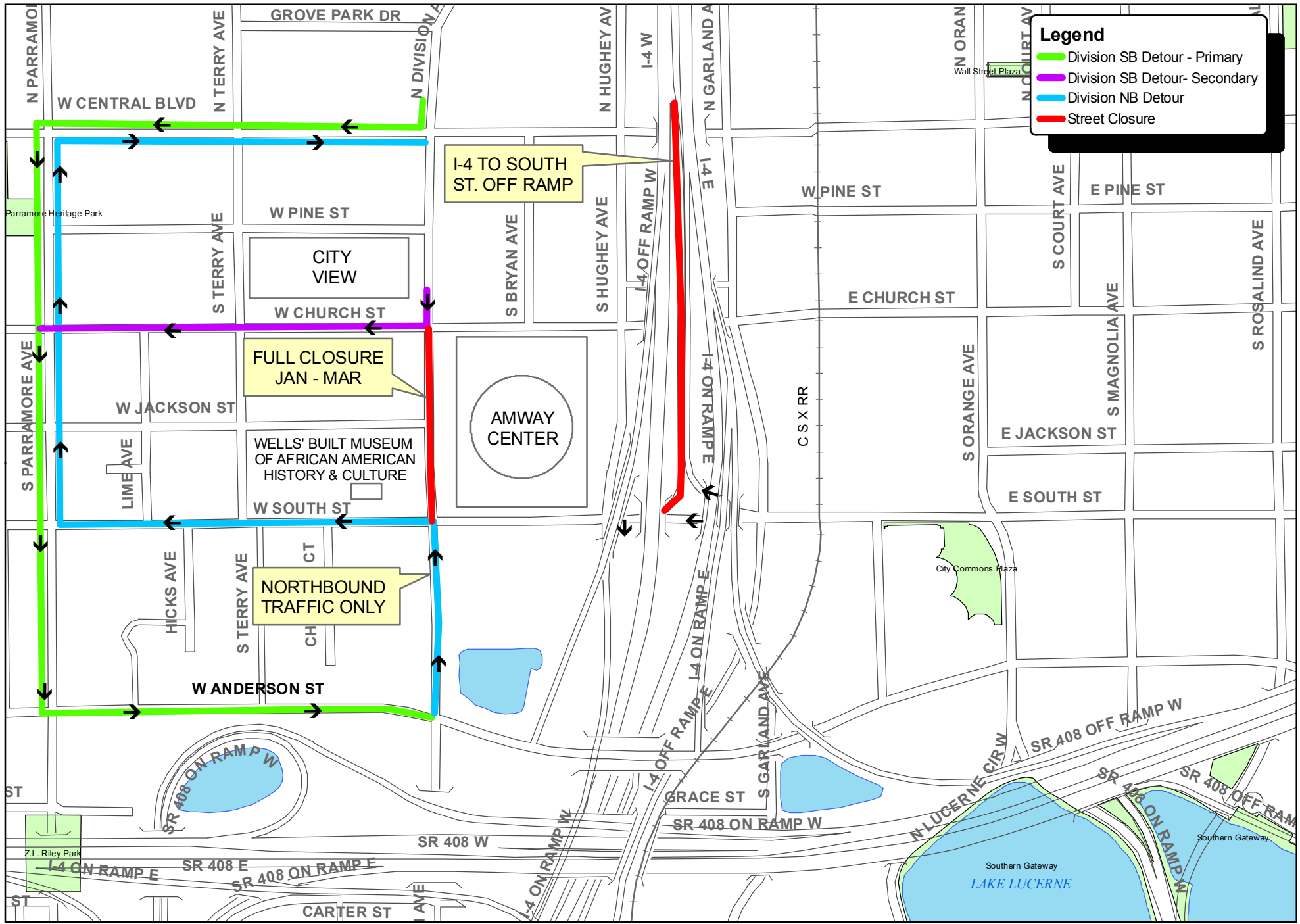
Florida Department of Transportation (FDOT) Central Florida Projects
<http://www.cflroads.com/>

Orlando Orange County Expressway Web Page
<http://www.ocea.com/Corporate/oursystem/ConstructionUpdates.aspx>

For information, concerning City of Orlando projects click on the following link.
http://www.cityoforlando.net/public_works/cityprojects/

Road closure information provided in this report reflects current and upcoming closures in an effort to keep you informed of construction and special event road closures that may affect your travel or access. For further information concerning these closures, contact Scott Walker, Traffic Control Manager at (407) 246-2372 or e-mail address: wscott.walker@cityoforlando.net

If you would like to receive street closure notices via email, contact Scott Walker at the above e-mail address or Patty Little at patricia.little@cityoforlando.net to request your name be added to the list.



Legend

- █ Division SB Detour - Primary
- █ Division SB Detour - Secondary
- █ Division NB Detour
- █ Street Closure

CITY OF ORLANDO
DIVISION AVENUE CLOSURES
January - March 2010